



PUBLICATION STRATEGIES IN REPUTABLE INTERNATIONAL JOURNAL FOR JUNIOR LECTURER

Dr. Nursama Heru Apriantoro
SCOPUS ID. 57105567500

apriantoro@poltekkesjkt2.ac.id

<http://orcid.org/0000-0002-7512-9541>

NURSAMA HERU APRIANTORO

nursama_91@yahoo.co.id

08996254512

- Dipl.Rad, ATRO Depkes RI, 1987
- S.Si, FMIPA UNDIP, 1998
- M.Si, FMIPA UI, 2003
- Ph.D, UTM Malaysia, 2011

Istri : NURYATI

Anak :

1. **MARYAM SYAHIDAH,**
2. **BILQIS AZIZAH,**
3. **IBADURROHMAN SIBGHOTULLOH**
4. **UQINU ATTAQI**
5. **AFNAN DZUNURAIN**





Nursama Heru Apriantoro

11.47 · Ph.D of Health Physics · [Edit](#)

[Add new research](#)

[Overview](#)

[Research](#)

[Info](#)

[Stats](#)

[Scores](#)

[Research you follow](#)

Introduction

[Edit](#)

[+ Introduce your profile to your peers](#)

Skills and expertise (22)

[Edit](#)

Computed Tomography

Magnetic Resonance

Medical Imaging

Radiation Detection

Affiliation

[Edit](#)

**Politeknik Kesehatan
Kemenkes Jakarta II**

Department

Radiodiagnostic and Radiotherapy

Position

Researcher

[Stats overview](#)

95.0

Research Interest



[More details](#)



149

Citations

[View](#)



2

Recommendations

[Show breakdown](#)



8,199

Reads



[Show breakdown](#)



SCOPUS ID

Scopus Preview

Author search

Author details

Apriantero, N. H.

[View potential author matches](#)

Politeknik Kesehatan Kementerian Kesehatan Jakarta II, Jakarta, Indonesia

 <http://orcid.org/0000-0002-7512-9541>

Subject area: [Environmental Science](#) [Medicine](#)

Documents by author

4

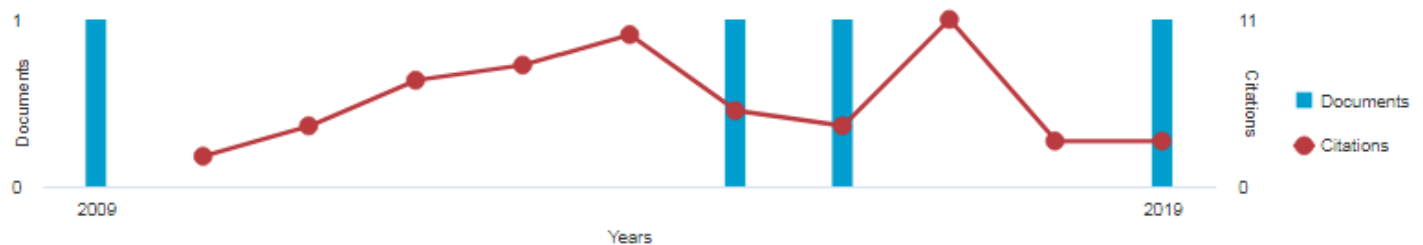
Total citations

57 by 56 documents

h-index: [?](#)

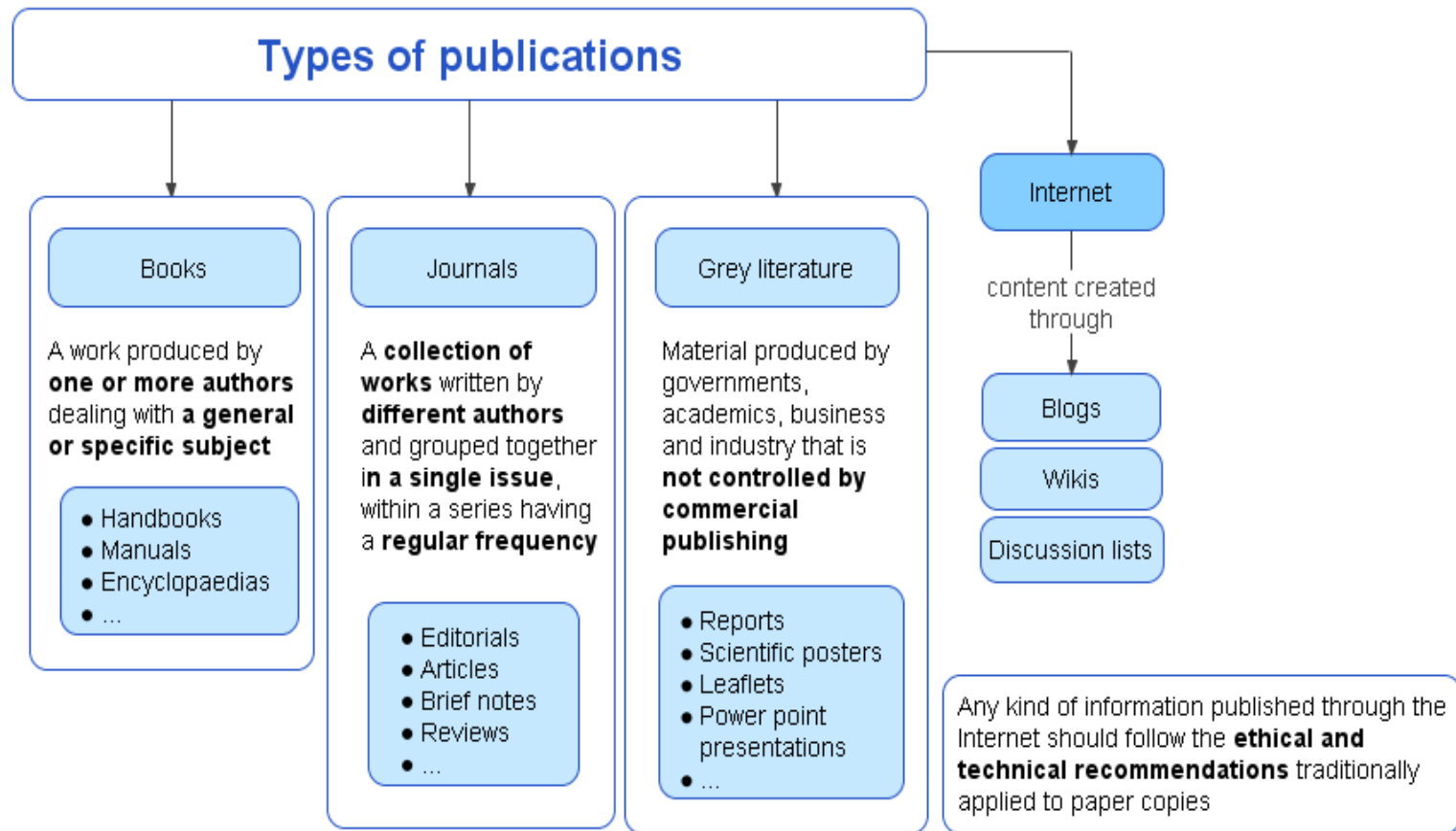
2

Document and citation trends:





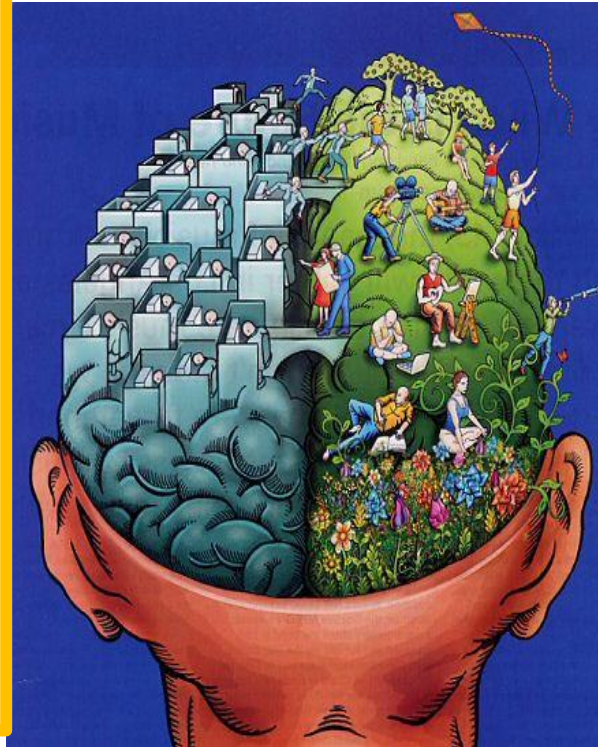
JENIS PUBLIKASI





Two sides to every brain...

I am the left brain.
I am a scientist.
A mathematician.
I love the familiar,
the constant. I
categorise.
I am logical, linear,
analytical, strategic,
practical, realistic
and always in
control. I know
exactly who I am.



I am the right brain.
I am creativity.
A free spirit. I am
passion, yearning for
change. I am
movement and vivid
colours. I am
boundless
imagination in the
form of art and
poetry. I sense. I
feel. I am everything
I want to be.

Reading and
understanding

Writing and
creativity

Adapted from a Mercedes-Benz Advert



JORGE CHAM © 2014

WWW.PHDCOMICS.COM





REGULAR EXERCISE atau BRAIN GYM

- ✓ Penulisan artikel dan publikasi pekerjaan ekstra berat, ➡ Olah Raga secara rutin
- ✓ OR dapat menstimulasi otak mendapatkan ide atau gagasan segar
- ✓ Otak segar akan timbul ide atau gagasan yang cerdas





TERAMPIL MENGGUNAKAN SOFTWARE PUNULIS ARTIKEL

- **Referencing Generator**; Zotero, Endnote, Mendeley, etc
- **Citation Search Engines**; Google Scholar, PubMed, PNRI, ProQuest, Ebsco, etc
- **Plagiarism Detector**; penentuan jumlah plagiat
- **Summarize**; menyimpulkan hasil manuscript
- **Translator** ; Google Drive, grammar checker
- **Spinner Journal**; paraphase artikel
- **OJS**; template, selingkung, login, submit



KETAHUI BEBERAPA MANUSCRIPTS ARTIKEL JOURNAL

1. **Original full length research papers (2,500 words)**
2. **Review articles (3,500 words)**
3. **Letters to the Editor (500 words)**
4. **Book Reviews (300 words)**
5. **Case reports (800 words)**
6. **Technical notes (1,000 words)**
7. **Short Communication (2,000 words)**
8. **Guest Editorials: These are short topical pieces (approx 1000 words)**



CASE REPORT

This section contains the details of the case, including the patient's history, physical exam, pertinent laboratory values, imaging findings, surgical results, and pathology findings. Explain in detail how the diagnosis was confirmed.



LAYOUT : CASE REPORT

CASE REPORT

▣ Title

▣ Little Abstract

▣ Keywords

▣ Highlights

1. Introduction

2. Case Presentation

3. Results and Discussion

4. Conclusion/s

▣ Acknowledgements

▣ References



ORISINIL, AUTHENTIC DAN NOVALTY

- Ide harus orisinal atau authentic bukan plagiat
- Nilai lebih jika mempunyai Novelty (dilanjutkan ke paten)
- **Orisinil** Artikel → ASLI belum pernah ditulis dan dipublikasikan oleh orang lain
- **Authentic**; artikel pernah diteliti ada unsur modifikasi atau tambahan
- **Novelty** adalah unsur kebaruan atau temuan dari sebuah penelitian, sudah pasti orisinal

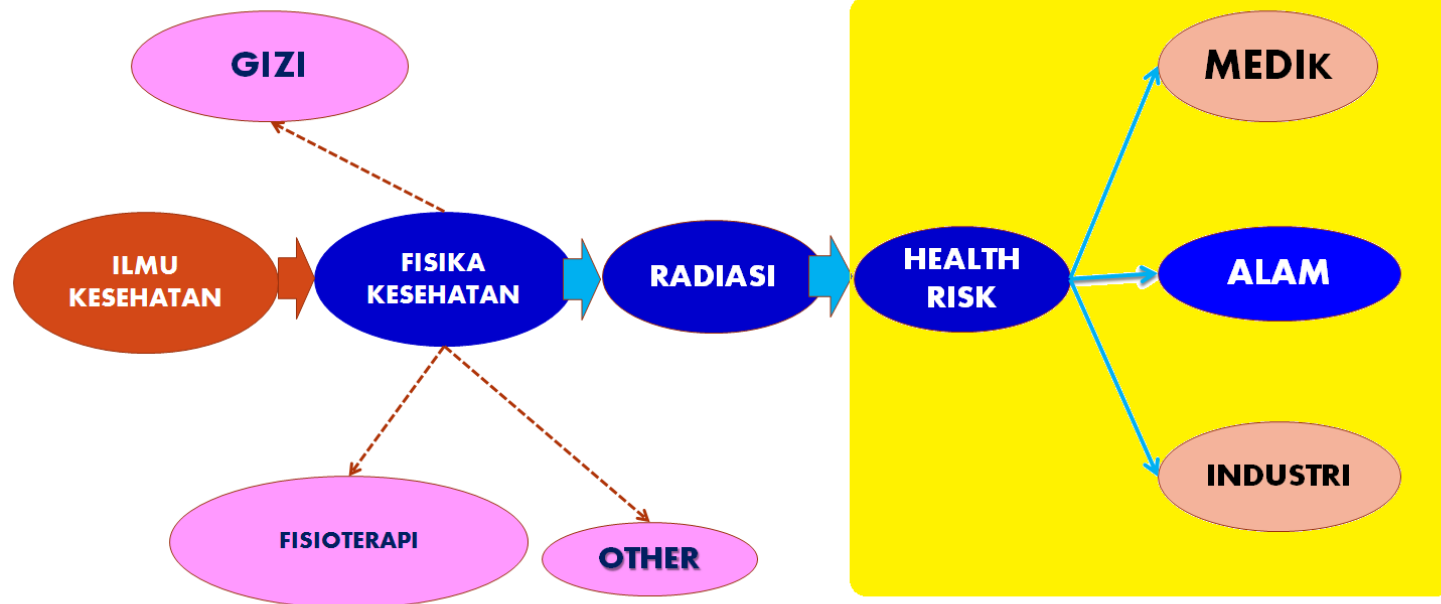


Radiasi Alam

- Istanbul mendapatkan nilai reratanya 65 nGy j^{-1} , dengan rentang dari $32 - 94 \text{ nGy j}^{-1}$.
- Costa Rica dari rerata bacaan dosis radiasi gamma daratan di daerah ini bernilai $29.5 \pm 14.5 \text{ nGy j}^{-1}$.
- Sepanyol mendapatkan nilai dosis radiasi gamma daratan terendah adalah 19.3 nGy j^{-1} ,
- Himachal Pradesh di India, dosis radiasi gamma daratan rerata di daerah ini bernilai 83 nGy j^{-1}
- Rio Grande de Norte, Brazil, Memberikan bacaan dalam rentang $32 - 330 \text{ nGy j}^{-1}$ (rerata, $107 \pm 47 \text{ nGy j}^{-1}$).
- Xunwu, Provinsi Jiangxi, Cina, nilai dosis rerata 81.5 nGy j^{-1} , bacaan tertinggi 188 nGy j^{-1} .

FOCUS dan TRACK RECORD

Telah ada Rekam Jejak Peneliti di Indexis Jurnal (Internasional)



PROFESOR DI BIDANG APA ..?

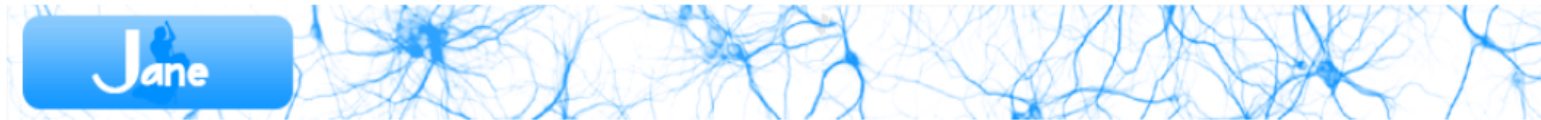
CONTOH ROADMAP PENELITIAN- PENGABDIAN

dst				
2015				
2014			DANA	
2013				HANJELI
2012		DANA		
2011			pascapanen hanjeli	teknologi budidaya dan prosesing dan pascapanen hanjeli di tiga lokasi pengembangan hanjeli---IBM Petani Hanjeli
2009-2010	DANA STRANAS DIKT Eksplorasi plasma hanjeli di Jawa analisis kera seleksi plasma hanjeli	DANA manfaat hanjeli berdaya hasil tinggi dan kandungan lemak tinggi		
Luaran	2 seminar nasional; 1 seminar internasional; 1 publ nas; 1 publ nas terakreditasi; 2 publ internasional; dan 1 monograf ber ISBN	3 seminar internasional; 3 publikasi internasional; 2 monograf; 2 suplemen buku ajar 3 TTG	2 seminar internasional 1 monograf 1 buku referensi 2 publikasi internasional bereputasi	1 publikasi nasional terakreditasi 1 TTG 1 bahan ajar

TRENDING TOPICS









Gunakan software biosemantiks

JANE = Journal / Author Name Estimator

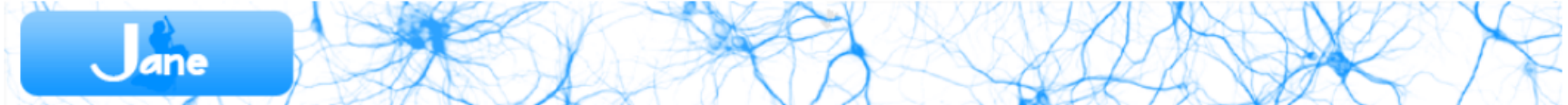


These articles are most similar to your input:
"TERRESTRIAL GAMMA RADIATION"

Showing results 1 - 20

Similarity	Citation
	<input type="checkbox"/> Sanusi MS, Ramli AT, Gabdo HT, Garba NN, Hervanshah A, Wagiran H, Said MN Isodose mapping of terrestrial gamma radiation dose rate of Selangor state, Kuala Lumpur and Putrajaya, Malaysia. Journal of environmental radioactivity. 2014
	<input type="checkbox"/> Gusain GS, Rautela BS, Sahoo SK, Ishikawa T, Prasad G, Omori Y, Sorimachi A, Tokonami S, Ramola RC Distribution of terrestrial gamma radiation dose rate in the eastern coastal area of Odisha, India. Radiation protection dosimetry. 2012
	<input type="checkbox"/> Lu H, Wang Q Evaluation on the environmental radioactivity in Shanghai city during the normal operational condition of Qinshan nuclear power station. Radiation protection dosimetry. 2013
	<input type="checkbox"/> Garba NN, Ramli AT, Saleh MA, Sanusi SM, Gabdo HT Radiological mapping of Kelantan, Malaysia, using terrestrial radiation dose rate. Isotopes in environmental and health studies. 2016
	<input type="checkbox"/> Kleinschmidt R, Watson D Terrestrial gamma radiation baseline mapping using ultra low density sampling methods. Journal of environmental radioactivity. 2016
	<input type="checkbox"/> Furukawa M, Kina S, Shiroma M, Shiroma Y, Masuda N, Motomura D, Hiraoka H, Fujioka S, Kawakami T, Yasuda Y, Arakawa K, Fukahori K, Jyunicho M, Ishikawa S, Ohomoto T, Shingaki R, Akata N, Zhuo W, Tokonami S Terrestrial gamma radiation dose rate in Ryukyu Islands, subtropical region of Japan. Radiation protection dosimetry. 2015
	<input type="checkbox"/> Shahbazi-Gahrouei D, Gholami M, Setayandeh S A review on natural background radiation. Advanced biomedical research. 2013
	<input type="checkbox"/> Dolhanczuk-Sródka A Estimation of external gamma radiation dose in the area of Bory Stobrawskie forests (PL). Environmental monitoring and assessment. 2012

AUTHOR HAVE SIMILAR ARTICLE



These authors have written articles most similar to your input:
"TERRESTRIAL GAMMA RADIATION"

Confidence	Author	E-mail	Articles
	Ramli AT	E-mail	Show articles
	Garba NN	E-mail	Show articles
	Gabdo HT	E-mail	Show articles
	Saleh MA	E-mail	Show articles
	Bossew P	E-mail	Show articles
	Tollefsen T	E-mail	Show articles
	Cinelli G	E-mail	Show articles
	Gruber V	E-mail	Show articles
	Tokonami S	E-mail	Show articles
	Sanusi MS	E-mail	Show articles
	Zhuo W	E-mail	Show articles
	Ielsch G	E-mail	Show articles
	Jönsson KI	E-mail	Show articles
	Ali M	E-mail	Show articles



WRITE ARTICLE and NOTES

- ✓ **Baca semua artikel yang di download,**
- ✓ **Buat highlight dan catat sebagai dasar pengembangan ide**
- ✓ **Gunakan perangkat lunak **Mendeley****
- ✓ **Perhatikan Tranding Topics Penelitian, gunakan software **biosemantics****
- ✓ **Tulislah dalam “bahasa” yang baik dan benar**

WRITE ARTICLE and NOTES

The screenshot displays the Mendeley Desktop application window. The title bar reads "Mendeley Desktop". The menu bar includes "File", "Edit", "View", "Go", "Tools", and "Help". The toolbar contains icons for "Select", "Pan", "Note", "Highlight", "Color", "Zoom", "Zoom To Fit", "Fullscreen", "Sync", and "Help", along with a search bar labeled "Search...".

The main content area shows a document titled "Radiography 19 (2013) 82–84". It features the Elsevier logo, the journal title "Radiography", and the URL "journal homepage: www.elsevier.com/locate/radi". Below this, the section "Case report" is highlighted, followed by the title "Importance of expiratory CT scanning of the thorax: A case report" and the authors "Dilip Oswal*, Joseph Hogg, Naim Khan". The affiliation "Mid Yorkshire NHS Trust, Pinderfields Hospital, Aberferd Road, Wakefield WF1 4DG, UK" is listed.

The "ARTICLE INFO" section includes the "Article history":
Received 17 June 2012
Received in revised form 30 July 2012
Accepted 2 August 2012
Available online 25 August 2012

The "ABSTRACT" section states:
A case of markedly increased transradiancy of lung, visible only on expiratory CT imaging is presented. Its cause and outcome are discussed along with a differential diagnosis of this finding.
© 2012 The College of Radiographers. Published by Elsevier Ltd. All rights reserved.

On the right side, the "Notes" panel is active, showing "GENERAL NOTES" with the text "IDE LAPORAN KASUS CT SCAN". Below the notes, a message reads: "Use the **highlight** and **note** tools to create annotations. Any annotations you create in Mendeley Desktop will be available on Mendeley for iOS, Android and Web".

WRITE ARTICLE and NOTES

The screenshot displays the Mendeley Desktop application interface. The top menu bar includes File, Edit, View, Go, Tools, and Help. Below it is a toolbar with icons for Select, Pan, Note, Highlight, Color, Zoom, Zoom To Fit, Fullscreen, Sync, and Help. A search bar on the right contains the text 'statistics' and a user profile icon for 'Nursama'. The main window shows a PDF document titled 'World (Indoor)' with page number 84. The document text is as follows:

was formed from continental and marine deposits with unconsolidated humic clay, peat and silt which was overlain by steep land soil type. The study conducted by Ramli et al. and Saleh et al. indicated that the geological formation Quaternary (3) has a relatively low mean gamma ray dose rate [17, 21, 32].

An isodose map for the measured gamma dose rate was plotted using ArcGIS 9.3 software (Fig. 4) and a comparative table of the present study with studies reported in some other countries is presented in Table 3.

The annual effective dose to the population was calculated based on UNSCEAR 2000 report which stated that the outdoor and indoor absorbed dose rates in Malaysia were 92 and 96 nGy h⁻¹, respectively. Based on that there is no significant difference between outdoor and indoor absorbed dose rates in which the outdoor absorbed dose rates in air was used to calculate the indoor using Eq. 2. In addition to that, most of inhabitant in the study area live in rural areas, in which wood and plant based materials were widely used as building materials. Those building materials contributed a very low to indoor absorbed dose rates compared to other building materials and has excellent ventilation. The outdoor and indoor effective dose equivalent

where OAE is outdoor effective dose equivalent and IAE is indoor annual effective dose equivalent. The annual outdoor and indoor effective dose equivalent were 0.184 mSv and 0.736 mSv, respectively. Hence, the annual effective dose equivalent (AE) to the population was 0.92 mSv y⁻¹ in Terengganu State.

The collective effective dose (SC) was found to be 9.35×10^2 man Sv y⁻¹ using the Eq. 3

$$SC = AE \times N(P) \quad (3)$$

Where N(P) is the population in Terengganu [27].

The cancer risk (R) to an individual was found to be 3.75×10^{-3} using Eq. (4).

$$R = AE \times AL_t \times RF \quad (4)$$

Where AL_t is the average life expectancy (70 years), RF is the risk factor (5.82×10^{-2}) [40].

The lifetime dose and lifetime cancer risk for each person living were 64.43 mSv and 3.75×10^{-3} , respectively.

Conclusion

The sidebar on the right contains a 'GENERAL NOTES' section with the title 'ESTIMASI RESIKO KANKER'. Below the title, it says: 'Use the **highlight** and **note** tools to create annotations. Any annotations you create in Mendeley Desktop will be available on Mendeley for iOS, Android and Web'.

At the bottom of the window, there is a 'Start' button and a page indicator 'Page 6 of 8'.



PERBANYAK RUJUKAN TERKINI

Several studies were conducted to measure the natural radiation in different countries [6–14]. In Malaysia, some studies have been conducted to measure the terrestrial natural radiation and associated health risk [15–26].

([Price and Nosten, 2001](#)). Resistance of *P. vivax* to CQ was first reported in 1989 from an Australian repatriated from Papua New Guinea ([Rieckman et al., 1989](#)). Resistance was subsequently reported from Sumatra and Papua, Indonesia in 1991 ([Baird et al., 1991](#); [Schwartz et al., 1991](#); [Murphy et al., 1993](#)), Myanmar in 1993 and 1995 ([Myat-Phone et al., 1993](#); [Than et al., 1995](#)), India in 1995 ([Garg et al., 1995](#); [Singh, 2000](#)), Malaysian Borneo in 1996 ([Clas et al., 1996](#)), Guyana, South America in 1996 ([Phillips et al., 1996](#)), parts of the Amazon Brazil ([Alecrim et al., 1999](#); [de Santana et al., 2007](#); [Simoes et al., 2007](#)), Colombia in 2001 ([Soto et al., 2001](#)), Vietnam in 2002 ([Tasanor et al., 2002](#)), Peru in 2003 ([Ruebush et al., 2003](#)), Turkey in 2004 ([Kurcer et al., 2004](#)), Ethiopia in 2008 ([Teka et al., 2008](#)), and Republic of Korea in 2009 ([Lee et al., 2009](#)). A 2003 report from northeastern Indonesian Papua showed



PENCARIAN RUJUKAN

- **GOOGLE SCHOLAR**
- **DOAJ (DIRECTORY OF OPEN ACCESS JOURNALS)**
- **PUBMED (The National Center For Biotechnology Information , NCBI)**
- **LINK SIMLITABMAS DIKTI (EBSCO, PROQUEST, CENGAGE)**
- **PERPUSTAKAAN NASIONAL RI**
- **AKSES FREEFULLPDF**
- **JANE (JOURNAL AUHTOR NAME ESTIMATION)**
- **AKSES MELALUI SCIENCEDIRECT**
- **EMERALD INSIGHT**
- **AKSES SINTA KEMENRISTEK DIKTI**
- **BUKU (GOOGLE BOOK, BOOKFI, PDFDRIVE, etc)**

AKSES JOURNAL DI SCOPUS

The Scopus logo is displayed in a dark teal color on a light gray rectangular background. The word "Scopus" is written in a bold, sans-serif font, with the 'S' being significantly larger than the other letters. The background has a subtle drop shadow effect.

Scopus

LANGKAHNYA :

- Buka melalui Link:
<https://www.scopus.com/source>
- Isi pada *Enter Subject Area* untuk mencari subjek yang sesuai
- Klik *Display only open acces journal* jika menginginkan free artikel
- Klik Quartile pada *Citescoure Highest Quartile* untuk Q yang sesuai
- Klik Journal pada *Source Type*
- Pilih jurnal yang sesuai
- Baca Author Guidlines

AKSES JURNAL DI SINTA



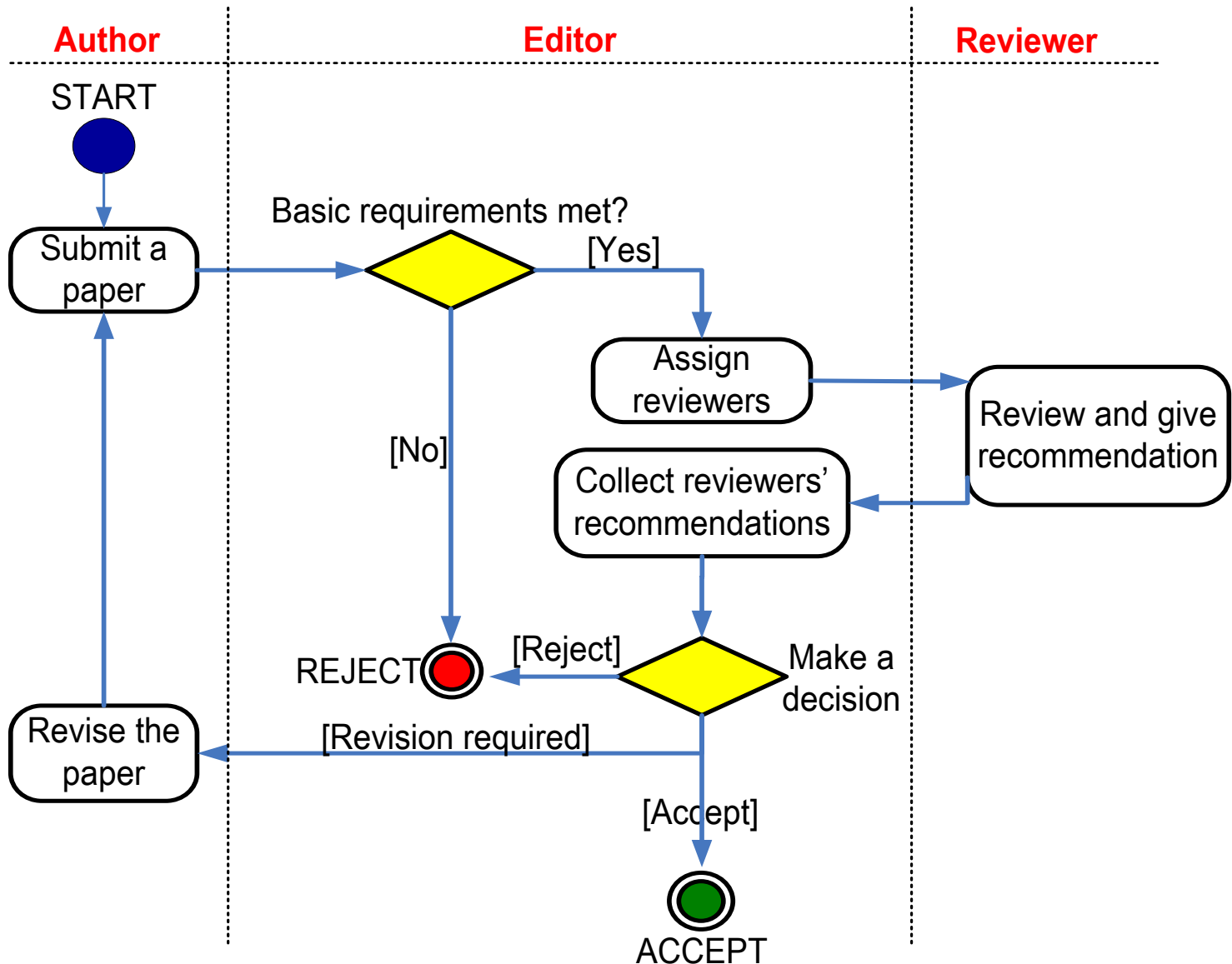
**JURNAL TERAKREDITASI
DIKTI**

LANGKAHNYA :

- Buka SINTA 2 KEMENRISTEK DIKTI
<http://sinta2.ristekdikti.go.id/>
- Buka SOURCE → journal
- Cari Jounal S1 sd S6
- Ketik di search nama jurnal
- Untuk melihat jurnal, bagian kiri bawah terdapat link website journal
- Klik link website jurnal utk melihat jurnal ybs.
- Lihat template



Who moved your manuscript?





CONSIDER EDITOR/REVIEWER ADVICES

- **Setiap komentar reviewer/pakar → enersi dan sumber ide dalam penulisan artikel**
- **Penolakan, awal diterimanya artikel dalam jurnal yang berbeda**
- **Cermati untuk penulisan selanjutnya**



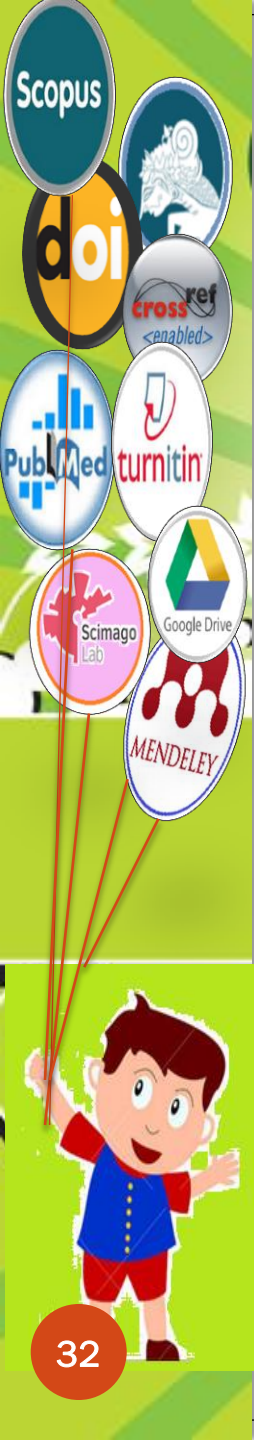
CONTOH KOMENTAR REVIEWER

- **Our Journal is not to publish papers that simply report concentrations**
- **The paper has a very poor introduction, discussion and conclusion**
- **The topic of the article is relevant; however, the quality of writing is so poor. There is much english editing improvements to be performed.**
- **unclear statistical analysis**
- **incompletely described measures**
- **There are doubts expressed as to whether or not it is actually meeting the scope of the Journal**
- **The technique and method has been widely published. This current paper adds no new clinical utililty.**



CONTOH KOMENTAR REVIEWER

- Please using main source in references, please retrieve Digital Object Identifiers (DOIs) at <http://www.crossref.org/SimpleTextQuery>
- There are references used for this paper more than five years old
- Although I commented that the number of significant digits should be decreased, four to five digits are still found in tables.
- We have checked your paper with iThenticate and found that the Similarity Index for your paper is 72%, which is higher than the maximum allowable rate of matches
- This topic would contribute a lot to literature in terms of providing an idea on how to deal with such cases.
- The author gives little information about the case. The case must be explained in detail.
- Only one case reported- not so rare a condition also Discussion too brief.



BEBERAPA CONTOH ARTIKEL DI TOLAK KEMENRISTEK DIKTI



RESULTS AND DISCUSSION

History of kue apem: There have been many versions of the origin of kue apem (Woodward, 2010) one of which comes from Kelaten where a wise man named Ki Ageng Kribig visited Mecca for pilgrimage. As he returned home, he brought three pieces of white round cake. Initially, he wanted to share them with his family and friends but they were not enough, so he and his wife made the similar version of the cakes that looked like the ones from Mecca. They later shared the bunch to express their gratitude for those who had prayed for and welcomed him home after the pilgrimage. It is common from the Indonesian people to give food or souvenirs after a trip to family and friends (Nurani and Subekti, 2016). Today, such tradition is only reserved to family members

Cake apem recipe: Kue apem is mainly made from rice flour and coconut milk (Herryani *et al.*, 2016). Sugar may be added for sweetener and tapai or coconut water may serve as baking agent. The mix is kept for an hour or overnight and later cooked on charcoal or wood stove using a small wok made out of clay that looks like that

CORPORATE CONTROL, AGENCY PROBLEM AND BOARD COMPOSITION: EVIDENCE FROM INDONESIA

Muhammad Agung Prabowo*

Indonesia

Corporate Board: Role, Duties & Composition / Volume 11, Issue 2, 2013

CORPORATE CONTROL, AGENCY PROBLEM AND BOARD COMPOSITION: EVIDENCE FROM INDONESIA

Tulus Haryono, Rahmawati*, Yunastiti Purwaningsih*, Muhammad Agung Prabowo**, Eddy Suratman****

Abstract

The study investigates the impact of agency problem and the distribution of corporate control on board composition using a dataset consisting of 190 listed firms in Indonesia. The conceptual framework is derived from agency theory assuming that board composition is endogenously determined by firm's specific environment. The study reveals that corporate control drives the composition of the board. The different types of large shareholders are found to pursue different strategies in relation to the board composition. While domestic and foreign investors rely on independent board, controlling family prefer to structure a less independent board. This suggests that the battle for corporate control between controlling family, in one side, and unrelated domestic and foreign investors begins with the structure of board. The findings imply that the type of large shareholder does matter in determining the device of corporate control.

Keywords: Board Composition, Agency Problem, Corporate Control, Ownership Structure

JEL Classification: G32

Abstract

The study investigates the impact of agency problem and the distribution of corporate control on board composition using a dataset consisting of 190 listed firms in Indonesia. The conceptual framework is derived from agency theory assuming that board composition is endogenously determined by firm's specific environment. The study reveals that corporate control drives the composition of the board. The different types of large shareholders are found to pursue different strategies in relation to the board composition. While domestic and foreign investors rely on independent board, controlling family prefer to structure a less independent board. This suggests that the battle for corporate control between controlling family, in one side, and unrelated domestic and foreign investors begins with the structure of board. The findings imply that the type of large shareholder does matter in determining the device of corporate control.

Keywords: board composition, agency problem, corporate control, ownership structure





- (2) Calculating and evaluating of green open space area (RTH) base on Indonesia Constitutions in UU No.26 year 2007 on spatial planning.

2. Method

2.1. Research Site

Location of this study is in Banda Aceh city, the capital city of Nangroe Aceh Darussalam (NAD) Province, west Sumatera, Indonesia



Figure 1. Research Location (BIG, 2003)

Aceh is a special territory of Indonesia, located on the northern of Sumatra. Aceh has substantial natural resources, including oil and gas, it is estimated that Aceh gas stockpile is as being the largest reserve in the world. Relatively, it is a religiously conservative area, since it is the first area of spread of Islam in Indonesia.

On Sunday, 26th December 2004, one of the most devastating natural disasters in recorded history occurred, at 7.0 am local time in Aceh, a huge 9.2 RS earthquake with epicenter near the island

IJEE; international journal of earth science and engineering vol 8 no 3



PERHATIAN: Jangan menyatakan Tabel atau Gambar disertai posisinya (misalnya sebagaimana ditunjukkan pada Tabel 1 / Gambar 1 di bawah ini dst)

Table 3 dinyatakan akan ditunjukkan pada halaman berikutnya padahal Tabel 3 ada pada halaman yang sama. (Ketidaktelitian Editor)

Table 3: Distribution of frequency and percentage of responses on roles of pesantren in community development

Roles of pesantren	Respondent						Column total N = 252 (%)
	Kyai n = 24 (%)	Teacher n = 24 (%)	Student n = 60 (%)	Community leader n = 54 (%)	Parent n = 60 (%)	Alumni n = 30 (%)	
As a religious center for people to enhance spirituality	10 (42%)	9 (38%)	23 (38%)	15 (28%)	25 (42%)	12 (40%)	94 (37%)
As a center for grooming religious scholars and preachers	8 (33%)	7 (29%)	16 (27%)	17 (31%)	15 (24%)	8 (26%)	71 (28%)
As a propagation center on religious ethics and principles	4 (17%)	4 (17%)	10 (17%)	4 (7%)	7 (12%)	3 (10%)	32 (13%)
As a lifelong learning center for learning religious practices for all age groups	2 (8%)	1 (4%)	3 (5%)	7 (13%)	6 (10%)	2 (7%)	21 (8%)
As a consultancy center for resolving conflicts in communities	0 (0%)	2 (8%)	8 (13%)	8 (15%)	3 (5%)	2 (7%)	23 (9%)
As a consultancy center for family and community development	0 (0%)	1 (4%)	0 (0%)	3 (6%)	4 (7%)	3 (10%)	11 (4%)
Row total	24 (100%)	24 (100%)	60 (100%)	54 (100%)	60 (100%)	30 (100%)	252 (100%)

as well as pesantren being the formal institutions for education and training of children and youth with many aspects of life and culture.

Table 3 next page shows the roles of pesantren in community development as analyzed from the responses to the checklist in the study. From our observations, it could be seen that pesantren in Kalimantan fittingly fulfil their long-held traditional function, i.e., religious

computerization (there are two large religious factions in Indonesia: the Muhammadiyah faction which is more modern and pragmatic oriented than the other faction, the Nadatul Ulama which is strongly traditional oriented. These two factions have their own group of pesantren and model of education and training. They are never in conflict with each other, each goes their own way).

Schooling time in pesantren was found to be divided



means that if miscellaneous official regional real income value ascends up to Rp.1, then regional real income value will also ascend up to Rp. 1.778.

CONCLUSION

Based on data analysis of calculated F-value, regional tax, regional retribution, self-governing regional wealth yield, and miscellaneous official regional real income were statistically showing simultaneous effect on regional real income.

Refer to data analysis of calculated t-value, regional tax was partially showing insignificant effect on regional real income. Calculated t-value of regional retribution was partially revealing significant effect on regional real income. Calculated t-value of self-governing regional wealth yield was partially showing insignificant effect on regional real income. Calculated t-value of miscellaneous official regional real income was partially revealing significant effect on regional real income.

Daftar Pustaka

Asep Adya Barata 2004, Pendapatan Asli Daerah." Terjemahan Barata. Jakarta.

Azis. 1997. Pendapatan Asli Daerah. Jakarta: Erlangga.

Badan Pusat Statistik. 2009-2015, Pendapatan Asli Daerah Bone, Dispenda. Kabupaten Bone

Bastian, Indra. 2002. Sistem Akuntansi Sektor Publik. Penerbit. Salemba 4, Jakarta.

Brata. 2004. Pengaruh Pendapatan Asli Daerah Terhadap Pertumbuhan Ekonomi. Penerbit: Salemba, Jakarta

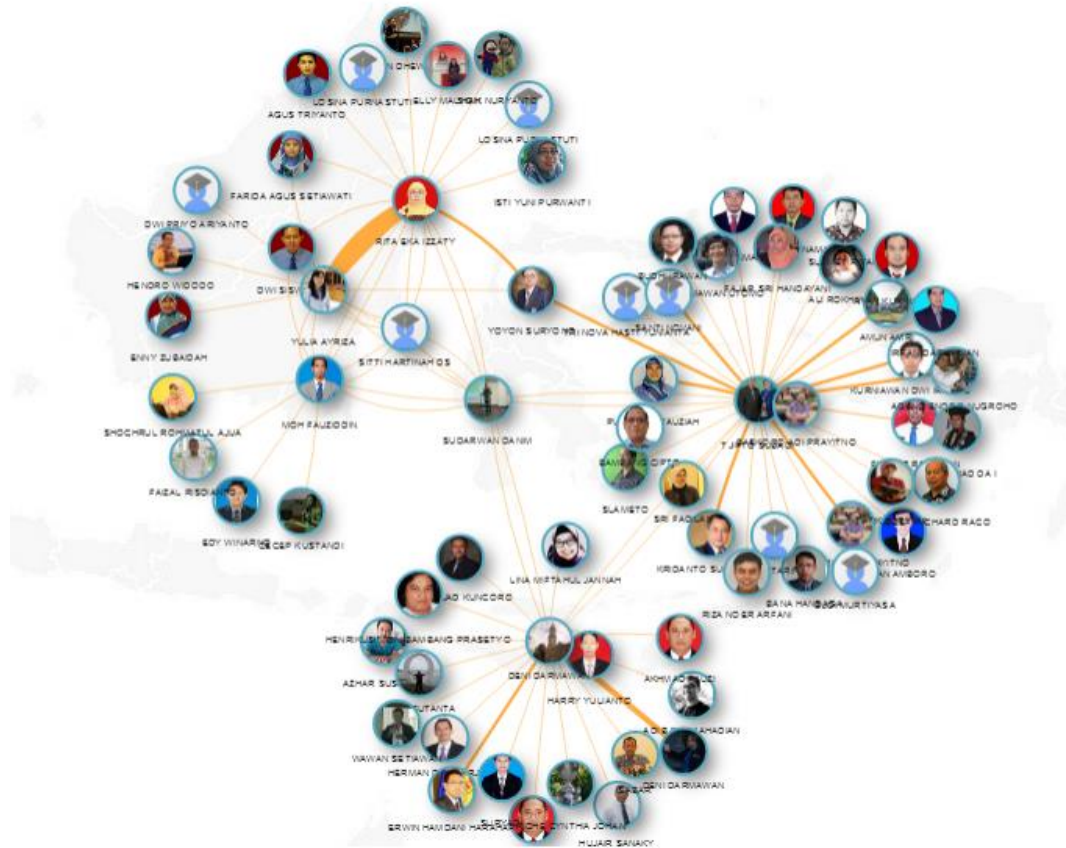
Biro Pusat Statistik Propinsi Sulawesi Selatan, 2003. Pengertian Product Domestic Regional Bruto (PDRB). Sulawesi Selatan. Penerbit: Erlangga, Jakarta.



JOINT TO RESEARCHER COMMUNITIES

- Aktif dalam komunitas peneliti atau organisasi profesi
- Banyak ilmu → banyak ide terutama topik-topik terkini dan yang akan datang.
- Membantu strategi penulisan artikel dan publikasi
- Berdiskusi dengan para penulis artikel atau tenaga profesional dalam rumpun ilmu yang sama
- Berkolaborasi penelitian

Indonesian Authors Collaboration Network





Scholarly Open Access

LIST OF PREDATORY PUBLISHERS

Abhinav

A M Publishers

Academe Research Journals

Academia Publishing

Academia Scholarly Journals (ASJ) Academic and

Business Research Institute Academic and Scientific

Publishing Academic Journals

Academic Journals and Research Academy

Academic Journals, Inc.

Academic Journals Online (AJOL) Academic Publications,
Ltd.

Academic Research Journals

Academic Research Publishing Agency Academic

Scholar Publishing House Academic Sciences

Academic Star Publishing Company Academic World

Education & Research Center

Academic Direct Academy & Industry Research

Collaboration Center (AIRCC)

Academy Journals Academy of IRMBR

International Research in Management and Business

Realities Academy of Knowledge Process Academy of

Science and Engineering (ASE)

Academy of Science and Social Science (ASSS)

Academy Publish Access International Journals

Ad Lovelace Publications

Advance Research Publications

Advanced Research Journals

Advanced Science and Engineering Technology
Institute (ASET)

Advancement and Development in Technology

International (Aditi)

AENSI African Research Review (AFRREV) AgiAl

Publishing House

Aizeon Publishers

<https://scholarlyoa.com/individual-journals/>



PRAYING TO ALLAH SWT

رب زدنی علماً وارزقنی فهماً.

Ya Allah, tambahkanlah kepada kami ilmu dan berilah saya pemahaman yang baik.

اَللّٰهُمَّ اِنِّیْ اَسْأَلُكَ عِلْمًا نَافِعًا، وَرِزْقًا طَیِّبًا، وَعَمَلًا مُّتَقَبَّلًا.





never never never

NEVER GIVE UP...

JANGAN PERNAH MENYERAH KALAH

TERIMA KASIH

